

## QUICK SHIP

38 Products / 437 Colors / 0 Worries

Milliken™

Condensed catalog showing only the 50cm carpet tiles available on the 3 day and 10 day quick ship program for use with the Powerflor Cable Management flooring system.

Request full catalog if a premium grade carpet is required.

**POWERFLOR** USA,  
INCORPORATED  
**CABLE MANAGEMENT SYSTEMS**



**CUSTOM PRODUCTS & SERVICES**

6286 Claude Way E, Inver Grove Heights, MN 55076-4435

PH: 888-444-1202 (Toll Free) or 651-452-0113 Fax: 651-452-2264

E-mail: [Info@custom-products.com](mailto:Info@custom-products.com)

Website: [www.custom-products.com](http://www.custom-products.com)

**150**

years of Milliken



**FWK-59 RENDER**



**FWK-120 FOUNDATION**



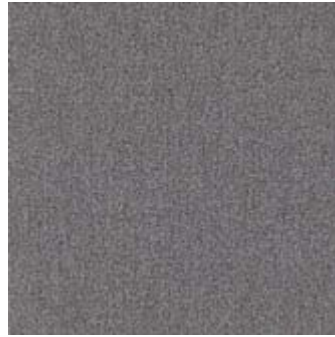
**FWK-171 CORNICE**



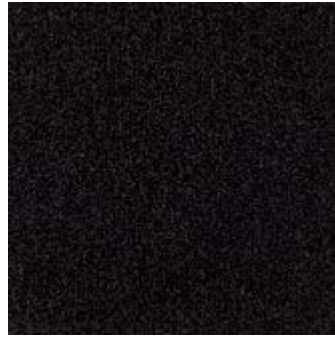
**FWK-108 PEDESTAL**



**FWK-122 PIER**



**FWK-13 PILLAR**



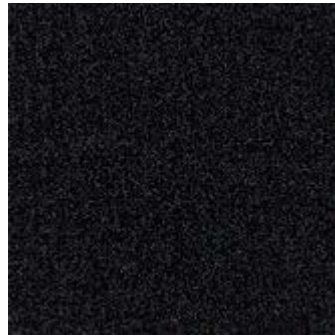
**FWK-133 VAULT**



**FWK-52 BLUEPRINT**



**FWK-119 GABLE**



**FWK-27 PITCH**



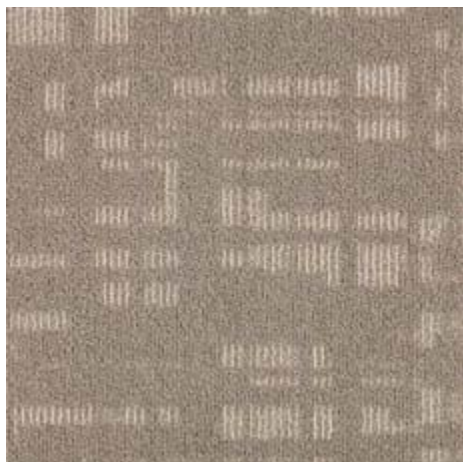
**FWK135 TANGERINE**



**FWK141 APPLE**



HS101 LOUNGE SINGER



HS107 VENTRILOQUIST



HS108 RING-A-DING



HS110 HEADLINER



SCA124-39 PLOT



SCA12-17 CORRELATION



SCA15-98 LINE



SCA59-98 ORIGIN



SCA47-124 ARRAY



SCA95-44 AFFINE



SCA19-47 GRID



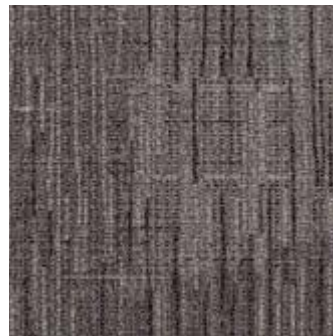
SCA95-27 BEST FIT



SCA79-108 HALF SPACE



SCA107-108 HYPERPLANE



SCA108-27 CARTESIAN



SCA04-87 SENSOR



GE402 EQUALIZER



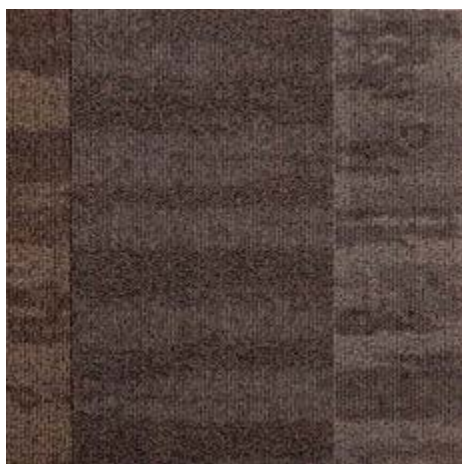
GE404 STEREO



GE412 RHYTHM



**IN302 EQUALIZER**



**IN304 STEREO**



**IN312 RHYTHM**



PA103 MIXER



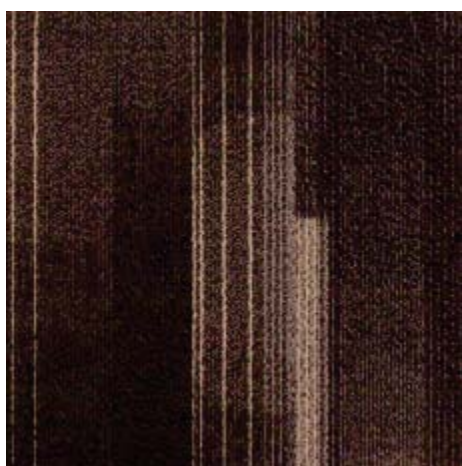
PA109 DIFFUSE



PA111 SIGNAL



PA115 TILT



PA117 VIGNETTE



PA118 ZOOM



PH403 MIXER



PH409 DIFFUSE



PH411 SIGNAL



PH415 TILT



PH417 VIGNETTE

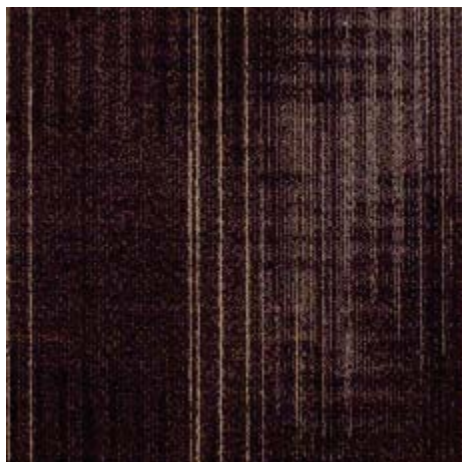


PH418 ZOOM





VF215 TILT



VF217 VIGNETTE



VT315 TILT



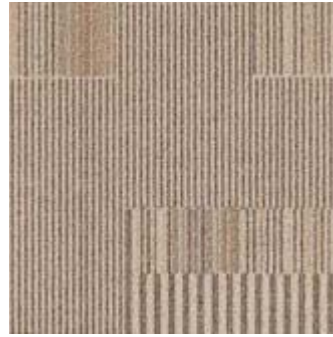
VT317 VIGNETTE



CN601 SAND



CN602 CAMEL



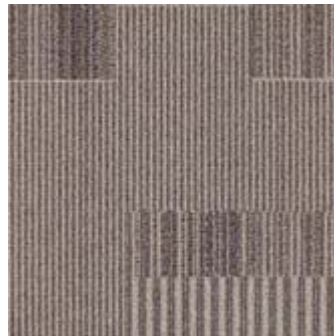
CN604 QUAIL



CN605 FAWN



CN607 DUTCH CHOCOLATE



CN613 BASIC GREY



CN617 BEDROCK



CN623 LICHEN



EC501 SAND



EC502 CAMEL



EC504 QUAIL



EC505 FAWN



EC507 DUTCH CHOCOLATE



EC513 BASIC GREY



EC517 BEDROCK



EC523 LICHEN



JV801 SAND



JV802 CAMEL



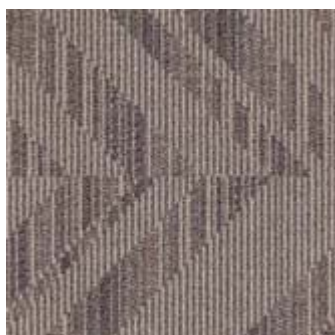
JV804 QUAIL



JV805 FAWN



JV807 DUTCH CHOCOLATE



JV813 BASIC GREY



JV817 BEDROCK



JV823 LICHEN



SB701 SAND



SB702 CAMEL



SB704 QUAIL



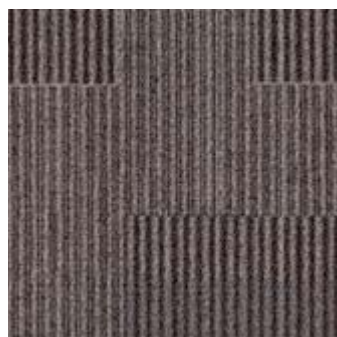
SB705 FAWN



SB707 DUTCH CHOCOLATE



SB713 BASIC GREY



SB717 BEDROCK



SB723 LICHEN

# ADVANTAGES OF MILLIKEN CARPET TILE



## Cushion Backing

Comfort Plus® & Underscore™ are Milliken's latest generation cushion backing systems and are standard on Milliken modular carpet products. In addition to providing superior underfoot comfort and significantly improving the carpet's wear performance, these cushion backings also offer ergonomic, acoustic, and environmental benefits.

Milliken cushion backing protects the carpet face from wear and can extend the carpet's life by up to 40%. Acting like an insulating shock absorber, Milliken cushion backings protect against wear, improve appearance retention and enhance comfort and safety. Cushion backing also helps Milliken carpets earn test ratings of Severe in the TARR system.

Milliken cushion-backed carpet tiles are unmatched in moisture management. They stop liquids at the surface and wick moisture away from the sub-floor thereby reducing conditions for mold and mildew growth. By allowing high levels of moisture to be transported through the tile, Milliken modular tiles can handle water vapor emissions up to 85% relative humidity. This unique feature eliminates one less worry about carpet in a high-humidity environment.

### Cushion Improves Acoustics

Much emphasis is placed on the need to reduce unwanted noise in corporate and public spaces. Reducing noise levels can improve comfort, well-being, the ability to concentrate and yield higher performance and productivity. Milliken cushion-backed tiles achieve an improvement in sound absorption performance by absorbing sounds across a wide range of frequencies including those most associated with human speech. Milliken's cushioned carpet tiles absorb up to 50% more noise than hard-backed carpets and up to 12X more than hard surface and rubber flooring. Better yet, the new LEED v4 rewards designers for providing spaces that facilitate better communications by offering up to 2 LEED points. Clearly, acoustics matter.



## TractionBack®

TractionBack® is a remarkable bio-based, high-friction coating that keeps our PVC-free carpet tile securely in-place without additional adhesives, floor sealers or primers. Applied during the manufacturing process, carpet tiles with TractionBack® require no manipulation, additional taping, or gluing steps in the field. Ready to install out-of-the-box makes installation, moving, or replacing Milliken carpet easier on you and the environment.

- Reduces or eliminates the need to prime or seal the floor
- Reduces or eliminates adhesive cost and saves on installation labor
- Eliminates the tools and labor to add other attachment mechanisms to the carpet tile
- Reduces or eliminates time spent spreading wet adhesives and waiting to dry
- Eliminates unnecessary waste like 'peel and stick' film covers
- Reduces or eliminates VOC off-gassing typically associated with floor sealants and adhesives
- allowing faster carpet installation and space habitation
- Stays in place even under high water vapor emissions
- Allows high levels of moisture to be transported through the tile
- Reduces or eliminates damage to raised access floors and high-quality sub-floors, leaving little or no residue
- Tiles can be lifted and re-placed multiple times without losing traction effect

# QUICK SHIP 2.0

Artifact  
Connection  
Effect  
Eye Contact  
Facade  
Fin  
Fixate Loop  
Formwork  
Front  
Gesture  
Hidden Plains  
Horseshoe  
Intensity

Isograd  
Jive  
Leno Weave 2.0  
Linen 2.0  
Nalu  
Outcome  
Panoramic  
Pinhole  
Plato  
Plato Trimline  
Scattergraph  
Sequel  
Shadowbox

Silhouette  
Snap Back 2.0  
Splice  
Tapa  
Tectonic  
True North  
Upshot  
Vestige  
Viewfinder  
Voltage  
Wave  
Woven Threads 2.0



These cushion-back carpet tile products are covered by one or more patents, published applications and/or patents pending. Specifications are subject to normal manufacturing tolerances and may be changed without prior notice.

These products have a UL® Environment 3<sup>rd</sup> party verified Environmental Product Declaration (EPD). A copy of each EPD is available online at [millikencarpet.com/epd](http://millikencarpet.com/epd) and [productguide.ulenvironment.com](http://productguide.ulenvironment.com).

Customer Concierge 800.824.2246 | [millikenfloors.com](http://millikenfloors.com)  
© 2015 Milliken & Company | Design © Milliken & Company | Made in the USA

Cover image: *Long Exposure/dataichi*, by Simon Dubreuil. © 2015 Getty Images